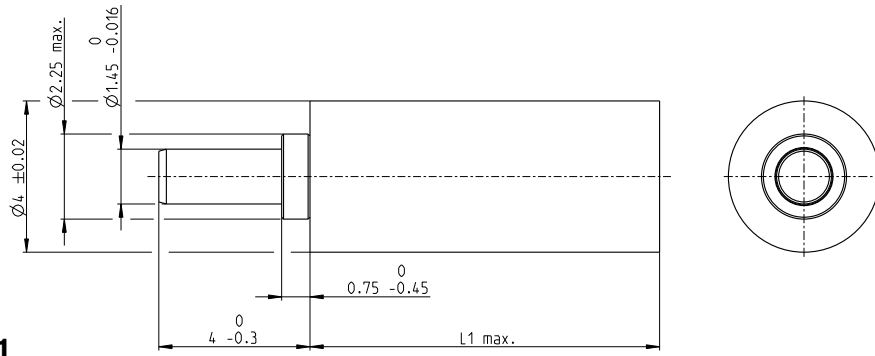


GPX 4 Ø4 mm, planetary gearhead

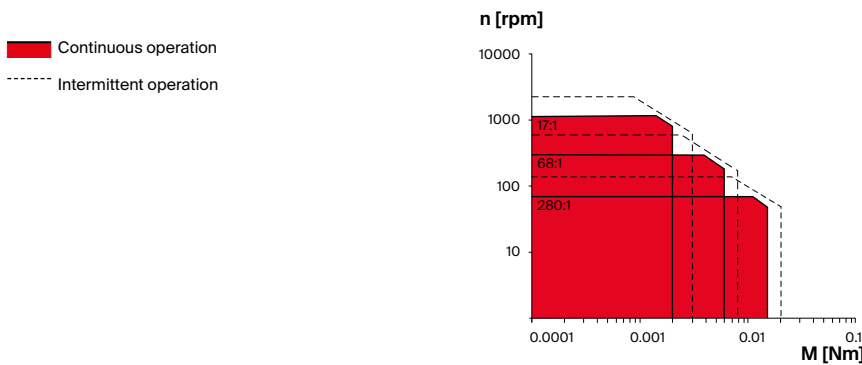
GPX



M 5:1

Key data		C Ceramic version	
Max. transmittable power	W	0.17	
Max. continuous torque	Nm	0.015	
Max. continuous input speed	rpm	20 000	
Ambient temperature	°C	-15...+80	
Bearing at output		Sleeve bearing	

Operating range (output shaft)		C Ceramic version	
--------------------------------	--	-------------------	--



Specifications		C Ceramic version			
Number of stages		2	3	4	
Max. transmittable power (continuous)	W	0.17	0.12	0.08	
Max. transmittable power (intermittent)	W	0.21	0.15	0.10	
Max. continuous torque	Nm	0.002	0.006	0.015	
Max. intermittent torque	Nm	0.003	0.008	0.020	
Max. continuous input speed	rpm	20 000	20 000	20 000	
Max. intermittent input speed	rpm	40 000	40 000	40 000	
Max. efficiency	%	76	70	65	
Average backlash no load	°	3.0	3.3	3.5	
Max. axial load (dynamic)	N	5	5	5	
Max. radial load, 4 mm from flange	N	3	4	4	
Gearhead length L1 ¹	mm	9.3	11.0	12.7	
Weight	g	0.4	0.5	0.6	

Configuration		C Ceramic version			
Number of stages		2	3	4	
Reduction	X:1	17	68	280	
Absolute reduction: (see online)					
Version		Ceramic Version			
Flange		Standard flange			
Shaft		with/without flat face			

Modular system		Page
EC motor	N° of stages [opt.]	
ECX SPEED 4 M	2-4	193
ECX SPEED 4 L	2-4	194

¹This length may vary depending on the configuration and choice of motor. The effective length is calculated at the end of the configuration process.